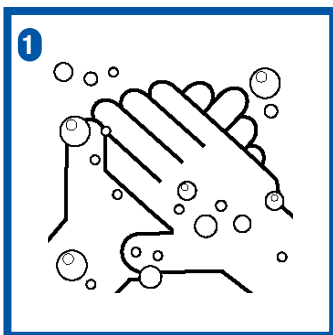
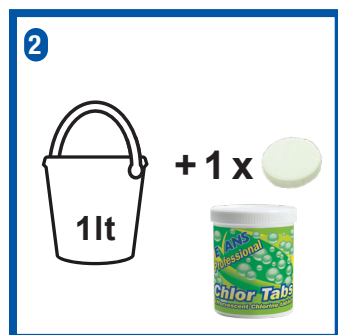


# HOW TO CLEAN AND DISINFECT EVOLVE DISPENSER

In hygiene critical areas, we recommend cleaning and disinfecting each time the dispenser is refilled or cartridge changed, and after long periods of inactivity.



Prior to any task, wash your hands for at least 20 seconds, then rinse and dry thoroughly.



Prepare a solution of Evans Chlor Tabs by adding 1 tablet to warm water in sink or bucket.



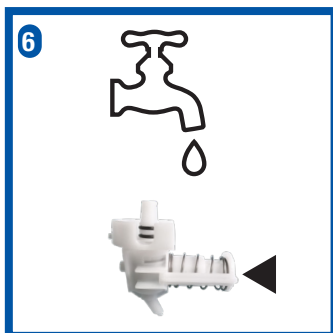
Open dispenser and remove empty cartridge or reservoir. Recycle cartridge (check local recycling).



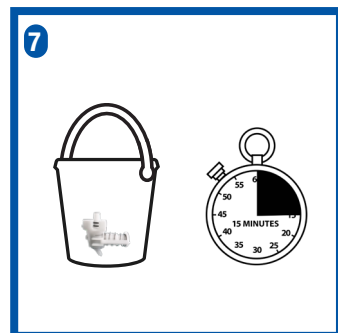
If cartridge has any soap left in it, remove with valve still attached (see Step 5) and turn upside down before detaching.



Remove dispenser valve by pressing release catch on right and lifting valve upwards.



Rinse valve and reservoir in warm water until runs clear. Pump the spring several times to ensure water runs through.



Disinfect valve and reservoir by soaking in Chlor Tabs solution for up to 15 minutes.



Rinse valve and reservoir in clean water. Wipe with disposable cloth/paper towel. Pump spring again with water.



Wipe interior and exterior of dispenser with a clean cloth.



Replace valve and reservoir in dispenser and refill or fit new cartridge. Close front cover until clicks to locked position.



It is important to regularly clean and disinfect dispenser valves and fittings to prevent blockages and contamination of the hand soap. Biofilms can form on outlet valves, fittings and the inside of refillable reservoirs if they are not cleaned regularly, causing bacteria and mould to multiply in the biofilm and contaminate the soap.

USE DISINFECTANTS SAFELY • ALWAYS READ THE LABEL AND PRODUCT INFORMATION BEFORE USE • WEAR APPROPRIATE PERSONAL PROTECTIVE EQUIPMENT (PPE)